

Material:

Housing:30% Glass filled PBT UL94V-0.

Contacts:Phosphor Bronze.

Electrical Characteristics:

Current Rating:15 AMP.

Dielectric Withstanding Voltage:AC 1000V For 1 minute.

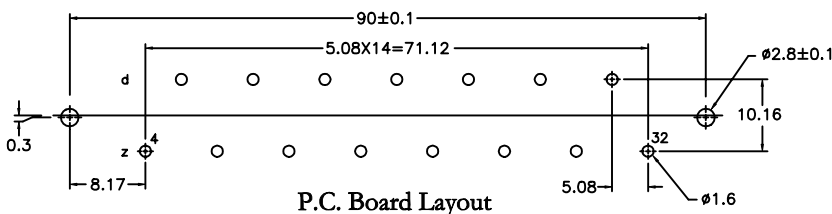
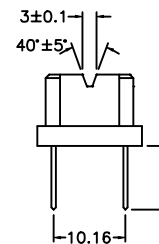
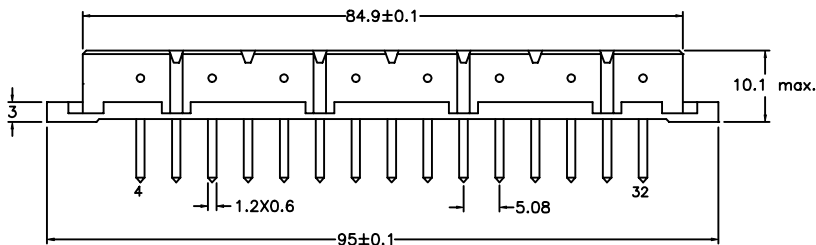
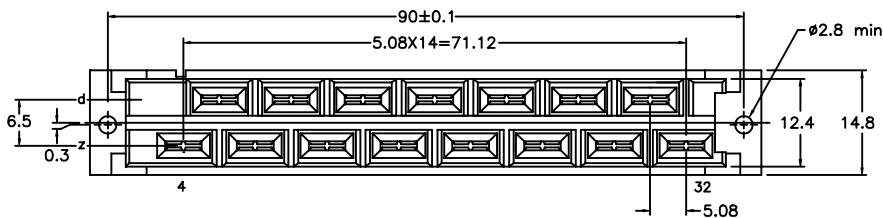
Insulator Resistance:1000M Ω min. at DC 500V.

Contact Resistance:30m Ω max. at DC 100mA.

Operating Temperature:-55°C ~+105°C.

Features:

- * D41612 2 Row high power connectors.
- * Current rated 15 Amp.
- * Contact pitch 10.16mm.
- * AG/NI Plating (alternative TIN/NI).
- * 4.0mm, 10.0mm solder tail length options.



X length	1	2
	4.0	10.0

Ordering information

9001- Series **52** **15** **1** **A**
 2: Female Position 1: Dip Length A: AG/NI Plating
 2: Dip Length T: TIN/NI Plating